

Dredge Readiness and Operation Plan Gulf Intracoastal Waterway (GIWW): Caloosahatchee River (CR) to Anclote River (AR)

FACTS & INFORMATION



JANUARY 2018

The U.S. Army Corps of Engineers is completing a Dredge Readiness and Operation Plan (DROP) for the 160-mile Gulf Intracoastal Waterway (GIWW) Caloosahatchee to Anclote River. This plan will outline maintenance dredging locations and anticipated completion timeframes for identified dredging priorities. It is anticipated that all required dredging will take place over the next 10-15 years, including a 2018 dredging event at Venice Inlet. The proposed dredging priorities are located within Manatee, Sarasota, and Charlotte Counties. Each of the proposed dredge priorities have experienced a higher degree of shoaling and sediment deposition than other areas within the GIWW. The proposed DROP would also address dredged material placement locations [e.g., Ocean Dredged Material Disposal Site (ODMDS), upland placement areas] and opportunities for beneficial reuse of sediments (e.g., nearshore, beach placement, ecological restoration).

PROJECT OVERVIEW

The DROP proposes maintenance dredging for five (5) priority sites along the GIWW that are located within Manatee, Sarasota, and Charlotte Counties. These sites involve approximately 7 miles of waterway where coastal processes have resulted in significant shoaling and deposition of sediment. While dredged material can be placed in approved upland placement areas and ODMDS, the Corps will prioritize beneficial reuse of dredged material within nearshore and beach areas where feasible. While not included in the 5 priorities identified to date, the DROP may also address the Federal and non-Federally maintained inlets that provide access to the GIWW.

KEY FACTS

- Dredged priorities located in Manatee, Sarasota, and Charlotte Counties
- ~7-miles to be dredged within the GIWW
- ~100 to 200 thousand cubic yards of material to be dredged
- Dredging and placement activities to begin in the fall of 2018 and end by 2033
- Dredged material placement options include upland placement, ODMDSs, and beneficial reuse (e.g., nearshore and beach areas)

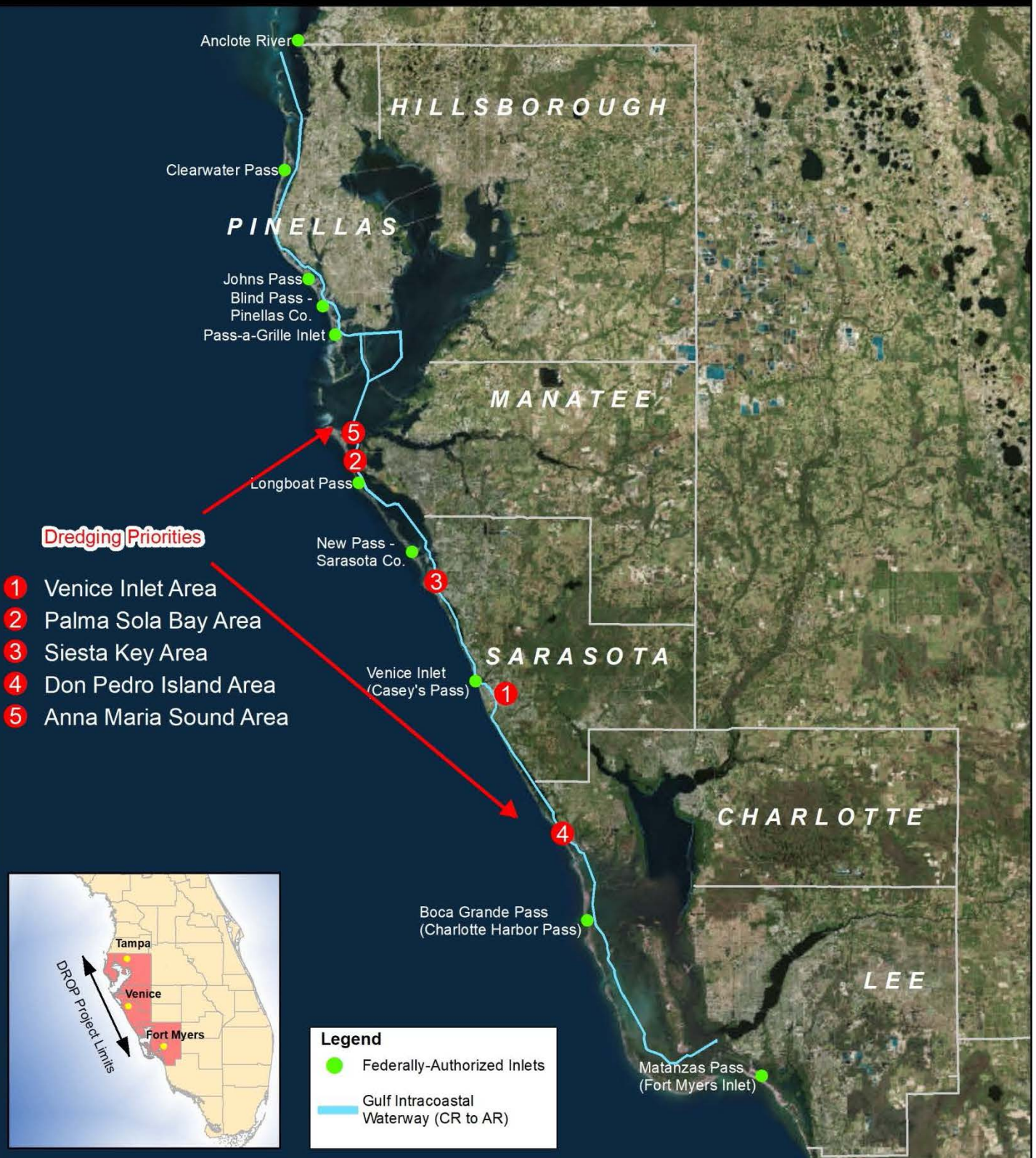
PROJECT AUTHORIZATION

The Gulf Intracoastal Waterway from the Caloosahatchee River to the Anclote River, which includes the area near Venice, was authorized by Chapter 19 of the Rivers and Harbors Act of 1945 (PL 79-14) in accordance with House Document Number 371, 76th Congress. Route modifications were authorized by the Rivers and Harbors Acts of 1948 (PL 80-858), 1950 (PL 81-516) and 1954 (PL 83-780).

The authorization directed the U. S. Army Corps of Engineers to construct and maintain 160 miles of Intracoastal Waterway to ensure safe and operable navigation to a depth of 9 feet plus 2 feet of over depth Mean Lower Low Water (MLLW). The waterway construction began in 1960 and was completed in 1967. The project winds through Lee, Charlotte, Sarasota, Manatee, and Pinellas Counties, Florida. The West Coast Inland Navigation District (WCIND) is the non-Federal sponsor for this Project.

Dredge Readiness and Operation Plan

Gulf Intracoastal Waterway (GIWW): Caloosahatchee River (CR) to Anclote River (AR)



LAUREL REICHOLD, Project Manager
701 San Marco Blvd
Jacksonville, FL 32207
Laurel.P.Reichold@usace.army.mil
904-232-1458

Project Geoportal: <https://arcg.is/bni14>
www.saj.usace.army.mil
Follow us on Social Media!
Facebook: [facebook.com/JacksonvilleDistrict](https://www.facebook.com/JacksonvilleDistrict)
Twitter: twitter.com/JaxStrong